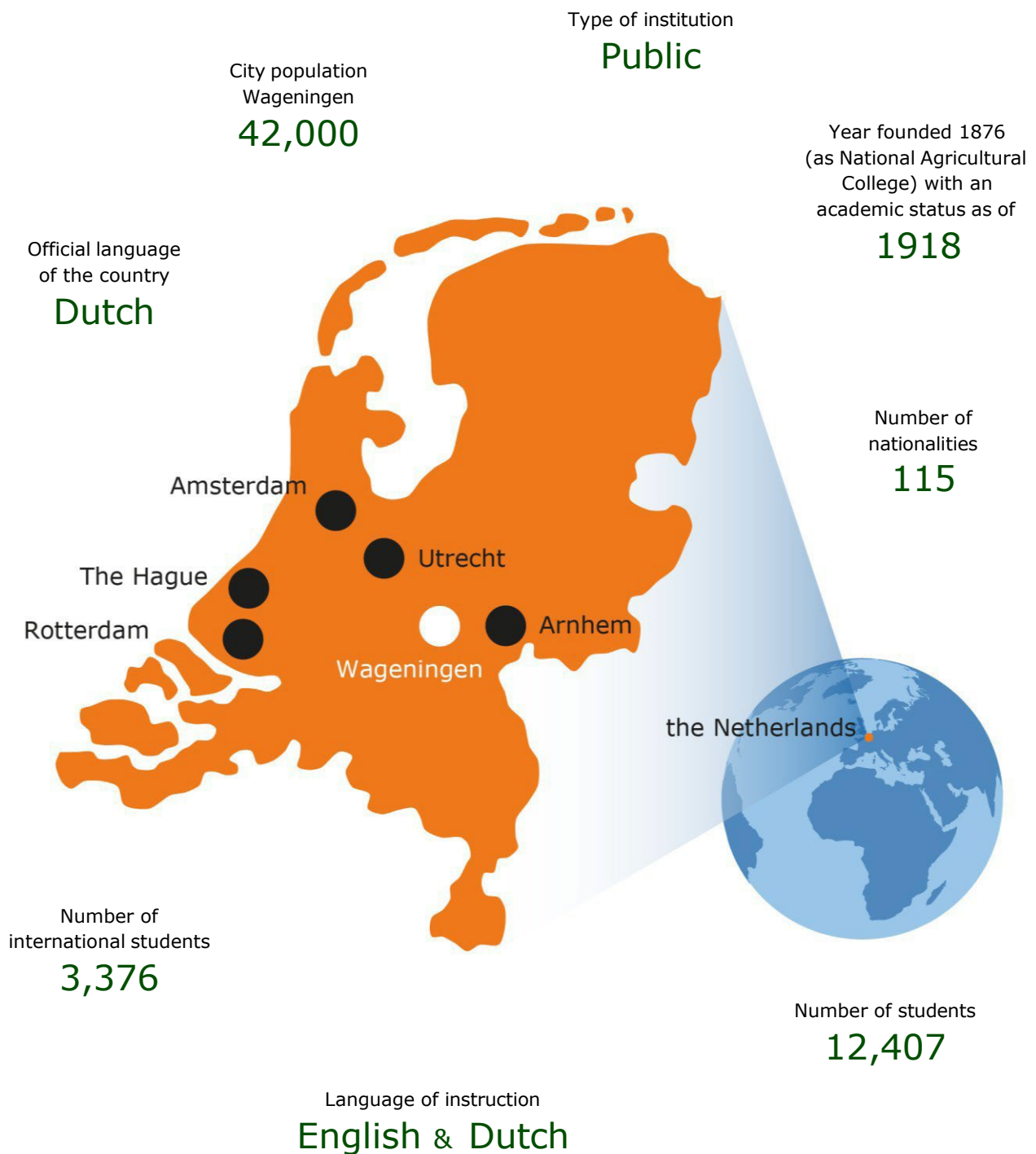


# Student Exchange

## Wageningen University & Research



---

## Academic calendar and dates

The academic year is divided in six periods. The Autumn term (which starts in September) consists of period 1 to 3 and the Spring term (which starts in February) consists of period 4 to 6.

### Calendar academic year 2026-2027 <sup>1</sup>

	Period
<i>Summer Orientation week</i> <sup>2</sup>	14/08/2026 – 19/08/2026
Study Period 1	31/08/2026 – 23/10/2026
Study Period 2	26/10/2026 – 18/12/2026
Christmas Holidays	21/12/2026 – 01/01/2027
Study Period 3	04/01/2027 – 29/01/2027
Resit exams p1+2	01/02/2027 – 05/02/2027
<i>Winter Orientation days</i> <sup>3</sup>	01/02/2027 – 03/02/2027
Study Period 4	08/02/2027 – 05/03/2027
Study Period 5	08/03/2027 – 30/04/2027
Resit exams p2+3+4	03/05/2027 – 07/05/2027
Study Period 6	10/05/2027 – 02/07/2027
Resit exams p5+6	05/07/2027 – 16/07/2027
Summer Holidays	19/07/2027 – 27/08/2027

<sup>1</sup> Schedule is subject to changes, please consult this website for up to date information: [Academic Year](#)

<sup>2</sup> Orientation week: see [Annual Introduction Days](#)

<sup>3</sup> Orientation days: see [Winter W' meet U days](#)



---

## Academic

### Academic Field

Faculty of Life Sciences

### Course descriptions

[Study Handbook](#)

### ECTS

General course: 6 ECTS

Full year load: 60 ECTS

### Classes conducted in English

Most 2<sup>nd</sup> and 3<sup>rd</sup> year BSc classes are in English.

All MSc classes are in English (B2 level required).

### Minors

Wageningen University & Research has 41 minors in

English. Check them [here](#).

## Eligibility for exchange

### Inter-institutional agreement

There should be an inter-institutional agreement for Student Mobility for Study (SMS) between the home university and Wageningen University & Research.

### Registration

Exchange students should be registered as a regular student at one of the partner universities.

### General course requirements

You have completed at least 90 ECTS at the time of your nomination. Preferably you have completed 120 ECTS at the start of your exchange, which equals at least two years two years of study at the home university/academic background. Students must fulfil course requirements (assumed knowledge in course descriptions).

### English proficiency minimum CEFR-level B2 – [Accepted tests](#) (minimum scores)

- Proof of English proficiency by your home university (minimum B2)
- TOEFL iBT: 80 (0-120 scale) or 4 (1-6 scale)
- IELTS Academic Test: 6.0
- Pearson PTE Academic Test: 61
- LanguageCert Academic Test: 65
- Cambridge FCE/B2 First: 169-190
- Cambridge CAE/C1 Advanced: 169-210
- Cambridge CPE/C2 Proficiency: 180-230
- International Baccalauréat: 3

## Application procedure

Detailed information about the exchange application procedure at Wageningen University & Research (WUR), deadlines and how to select courses can be found on our [exchange website](#).

Students have to be nominated for exchange by the coordinator from their home university. The home university can fill out the nomination form sent from [incoming.exchange@wur.nl](mailto:incoming.exchange@wur.nl).

Deadlines	Start 1 <sup>st</sup> Semester (September)		Start 2 <sup>nd</sup> Semester (January or later)	
	<i>NON-EU nationality students</i>	<i>EU/EFTA nationality students</i>	<i>NON-EU nationality students</i>	<i>EU/EFTA nationality students</i>
<b>Nomination by home university</b>	April 1 <sup>st</sup>	April 15 <sup>th</sup>	September 15 <sup>th</sup>	October 1 <sup>st</sup>
<b>Application submitted by student</b>	April 15 <sup>th</sup>	May 1 <sup>st</sup>	October 1 <sup>st</sup>	October 15 <sup>th</sup>
<b>Fully signed Learning Agreement</b>	June 1 <sup>st</sup>	July 1 <sup>st</sup>	November 1 <sup>st</sup>	December 1 <sup>st</sup>
<b>Payment and documents</b>	July 1 <sup>st</sup>		December 1 <sup>st</sup>	
<b>Legal Stay</b>				

---

## Estimated monthly expenses

Rent of student accommodation	Health insurance and legal liability insurance	Groceries	Books and study materials	<b>Total</b>
				
€ 350 - € 550	€ 75	€ 400	€ 200 per year	<b>About € 1150 per month</b>

## Housing

Because there is a high demand for student housing in Wageningen, it can be challenging to find a place to stay. As there is a shortage of housing, the number of rooms allocated to exchange students is very limited. We try to give priority for housing to students from non-EU partners. Unfortunately, we cannot offer students from EU/EFTA countries a student room. We would recommend everyone to register for a room via [www.room.nl](http://www.room.nl) as soon as possible. For more information, check the website of **Idealis**. More information about housing can be found [here](#).

## Immigration information

For some incoming students, Wageningen University & Research needs to apply for a entry visa (MVV) and/or residence permit (VVR) after admittance; students should not start procedures themselves. The Student Immigration Office of Wageningen University will send the application for entry visa and/or residence permit to the immigration authorities (IND). The dues for this procedure are € 254,- (2026). In the table below you can check which permit(s) are needed.

Country of origin	MVV entry visa needed?	Residence permit needed?	Working permit needed?
EU/EFTA countries	NO	NO	NO
Australia, Canada, Japan, Monaco, New-Zealand, South Korea, UK, USA, Vatican City	NO	YES	YES
All other countries	YES	YES	YES

## Social life

Annual Introduction Days



[www.aidwageningen.nl/en](http://www.aidwageningen.nl/en)

ESN & ISOW



[www.esn-wageningen.nl](http://www.esn-wageningen.nl)  
[www.isow-wageningen.com](http://www.isow-wageningen.com)

Student Associations and Sports

Sports Centre de Bongerd



[Student Life](#)

---

# Exchange Team

## Contact for partners

Contact for international and European partners, Study Abroad Advisors and Exchange coordinators for negotiation and development of exchange agreements, study abroad, policy and strategy.

### Student Service Centre (SSC)

Forum (building 102) | room C059B  
Droevendaalsesteeg 2  
P.O. Box 414 | 6700 AK Wageningen the Netherlands  
T +31 317 48 25 95

### Team leader/Institutional coordinator

Eric de Munck

### Liaison officer exchange

Vera Gouw

Partners can fill out the nomination form sent from [incoming.exchange@wur.nl](mailto:incoming.exchange@wur.nl).

More information about nomination and application deadlines can be found on [our website](#). Applications should be completed in the WUR application portal.

For international partners for negotiation and development of exchange agreements:  
[office.studentexchange@wur.nl](mailto:office.studentexchange@wur.nl)

## Exchange coordinators

Contact for individual applications for (incoming and outgoing) student exchange.

### Incoming students

Forum (building 102) | room 062  
Droevendaalsesteeg 2  
P.O. Box 414 | 6700 AK Wageningen the Netherlands  
E [incoming.exchange@wur.nl](mailto:incoming.exchange@wur.nl)

### Exchange coordinators

Marita van den Bergh  
*also contact for Indonesia*

Ellen de Jong  
*also contact for China, Singapore and South Korea*

Yans van het Reve  
*also contact for Brazil, Chile, Colombia and Taiwan*

### Outgoing students

Forum (building 102) | room 060  
Droevendaalsesteeg 2  
P.O. Box 414 | 6700 AK Wageningen the Netherlands  
E [outgoing.exchange@wur.nl](mailto:outgoing.exchange@wur.nl)

### Exchange coordinators

Dennis Duindam  
*contact for Australia and New Zealand*

Sofie Sweers  
*contact for Canada, Japan and Thailand*

Michelle van Helvoort  
*contact for South Africa and USA*

---

---

## Erasmus+ grant application for outgoing students

Exchange Office concerning administration and organisation of student exchange & Erasmus scholarships.

---

### Student Service Centre (SSC)

Forum (building 102) | room 057D  
Droevendaalsesteeg 2  
P.O. Box 414 | 6700 AK Wageningen the Netherlands  
T +31 317 48 57 99  
E [studentexchange@wur.nl](mailto:studentexchange@wur.nl)

### Exchange Administrators:

Yvonne Ceelen  
Daisy Bravo Delgado  
Alena Kural

---

### General contact information

Erasmus code

NL WAGENIN01

Website

[Incoming Exchange](#)

Social Media



[www.facebook.com/wur](https://www.facebook.com/wur)



[www.instagram.com/uniwageningen](https://www.instagram.com/uniwageningen)

### Wageningen University & Research

